

## KW6516 AC 1200Mbps OpenWRT Gigabit Router



### Default Login Details

**Login Address:** [www.mykasda.com](http://www.mykasda.com)

**Login Password:** Set up by users

**Default Wi-Fi SSID:** Kasda xxxx KW6516  
(Printed on product label)

**Default Wi-Fi Password:** 12345678

# Content

<b>1 INTRODUCTION</b> .....	<b>2</b>
<b>1.1 MAIN FEATURES</b> .....	<b>2</b>
1.1.1 <i>Wireless</i> .....	2
1.1.2 <i>Network Protocol and Features</i> .....	2
1.1.3 <i>Firewall</i> .....	2
1.1.4 <i>Management Support</i> .....	3
1.1.5 <i>Operating System Support</i> .....	3
1.1.6 <i>Environmental</i> .....	3
<b>1.2 PACKET CONTENTS</b> .....	<b>3</b>
<b>1.3 SYSTEM REQUIREMENTS</b> .....	<b>3</b>
<b>1.4 FACTORY DEFAULTS</b> .....	<b>4</b>
<b>1.5 WARNINGS AND CAUTIONS</b> .....	<b>4</b>
<b>2 HARDWARE DESCRIPTION</b> .....	<b>5</b>
<b>3 HARDWARE INSTALLATION</b> .....	<b>7</b>
<b>4 PC CONFIGURATION GUIDE</b> .....	<b>7</b>
4.1 <b>FOR WINDOWS 7</b> .....	<b>7</b>
4.2 <b>FOR WINDOWS 8</b> .....	<b>7</b>
4.3 <b>FOR WINDOWS XP</b> .....	<b>8</b>
4.4 <b>FOR MAC OS X</b> .....	<b>8</b>
<b>5 QUICK SETUP OF THE ROUTER</b> .....	<b>8</b>
<b>6 WEB-BASED ADVANCE MANAGEMENT GUIDE</b> .....	<b>16</b>
<b>APPENDIX: FREQUENT ASKED QUESTIONS</b> .....	<b>26</b>
<b>1. POWER, HARDWARE CONNECTIONS, AND LEDS</b> .....	<b>26</b>
<b>2. DEVICE ACCESS AND LOGIN</b> .....	<b>26</b>
<b>3. INTERNET ACCESS</b> .....	<b>27</b>

## 1 Introduction

Thank you for choosing our product. The KW6516 Wireless Router uses DD-WRT solution that fully complies with IEEE802.11b/g/n/ac standards. It will provide your SOHO with convenient Internet.

### 1.1 Main Features

#### 1.1.1 Wireless

Fully IEEE 802.11b /g /n & IEEE 802.11ac compatible

Wireless data rate up to 1200 Mbps

Operating in the unlicensed 2.4 GHz &5GHz ISM band

Supports 64/128 bits WEP, WPA, WPA2, WPA/WPA2-PSK, 802.1x

#### 1.1.2 Network Protocol and Features

Ethernet to modem Self-Learning Transparent Bridging

Internet Control Message Protocol (ICMP)

IP Static Routing

MTU Adjustment

Routing Information Protocol (RIP, RIPv2)

Network Address Translation (NAT)

Virtual Server, Port Forwarding

Dynamic Host Configuration Protocol (DHCP)

DDNS Support/DNS Relay Agent

Simple Network Time Protocol (SNTP)

VPN pass-through (IPSec/PPTP/L2TP)

#### 1.1.3 Firewall

Built-in NAT

MAC Filtering

Packet Filtering

Stateful Packet Inspection (SPI)

Denial of Service Prevention (DoS)

DMZ

#### **1.1.4 Management Support**

Web Based GUI

Upgrade or update via FTP/HTTP

Command Line Interface via Telnet

Diagnostic Test

Firmware upgrade-able for future feature enhancement

#### **1.1.5 Operating System Support**

WINDOWS 98/SE/ME/2000/XP/VISTA/7/8/8.1/10

Macintosh

LINUX

#### **1.1.6 Environmental**

Operating humidity: 10%-90% non-condensing

Non-operating storage humidity: 5%-95% non-condensing

### **1.2 Packet Contents**

The packet contents are as the following:

Router x 1

Power Adapter x 1

Ethernet Cable x 1

Quick Setup Guide x 1

### **1.3 System Requirements**

Broadband Internet Access Service (modem/Ethernet)

One Modem that has an RJ45 connector (which is not necessary if the Router is connected directly to the Ethernet)

PCs with a working Ethernet Adapter and an Ethernet cable with RJ45 connectors

TCP/IP protocol on each PC

Web browser, such as Microsoft Internet Explorer, Mozilla Firefox or Apple Safari

#### **1.4 Factory Defaults**

The device is configured with the following factory defaults:

Login Address: [www.mykasda.com](http://www.mykasda.com)

Login password: Set up by users

Default Wi-Fi SSID: Kasda XXXX KW6516

Default Wi-Fi Password: 12345678

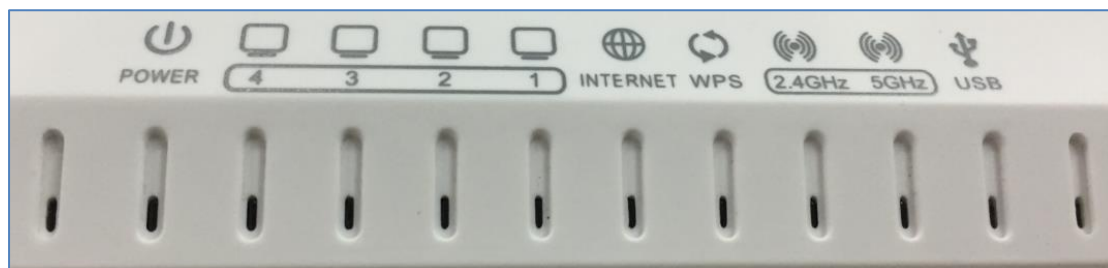
#### **1.5 Warnings and Cautions**

Never use the product near water.

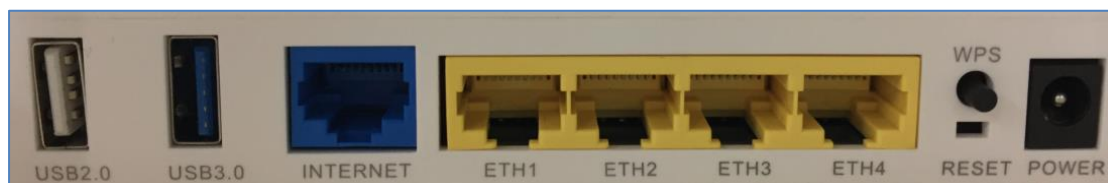
To prevent dangerous overloading of the power circuit, be careful about the designed maximum power load ratings. Not to follow the rating guideline could result in a dangerous situation.

## 2 Hardware Description

### Front Panel



LED	Color	Function
POWER	Blue	OFF: Power Not Supplied On: Power Supplied
LAN	Blue	On: LAN link established and active via LAN port Blinking: Data activity occurs Off: No LAN link via LAN port
INTERNET	Blue	On: The WAN port has detected a link with an attached device Blinking: Data is being transmitted or received by the WAN port Off: No WAN link via the WAN port
WPS	Green	On: WPS connection is established Blinking: Trying to establish a WPS connection Off: WPS function is off or no WPS connection
WIFI 2.4G/5G	Blue	On: The 2.4GHz or 5GHz wireless module is ready and idle Blinking: Data transmitting or receiving over WLAN Off: The 2.4GHz or 5GHz wireless function is off
USB	Blue	On: USB connection is established Blinking: : Data transmitting or receiving over USB. Off: USB function is off or no USB connection

**Rear panel**

Port	Function
INTERNET	Connect the device to a cable or modem
ETH1,2,3,4	Connect the device to your PC's Ethernet port, or to the uplink port on your hub/switch, using a RJ-45 cable
RESET	System reboot or reset to factory defaults
WPS	Turn on/off your WPS
Power	Connect to the supplied power adapter
USB2.0/3.0	Connect to a printer or other storage device

### 3 Hardware Installation

This chapter shows you how to connect Router. Meanwhile, it introduces the appropriate environment for the Router and installation instructions.

1. Using an Ethernet Cable to connect the WAN port of the ROUTER to a cable or modem.
2. Using an Ethernet Cable to connect the LAN port of the ROUTER to your LAN or a PC with network card installed.
3. Connect the power cable to the PWR connector on ROUTER, then plug in the power adapter to the AC power outlet, and then press the on-off button.



### 4 PC Configuration Guide

#### 4.1 For windows 7

1. Click **“Start -> Control Panel-> Network and Internet -> View networks status -> Change adapter settings”**
2. Right-click **Wireless Network Connection**(or Local Area connection), and then click **Properties**.
3. Select **Internet Protocol Version 4 (TCP/IPv4)**, and then click **Properties**.
4. Select **Obtain an IP address automatically** and **Obtain DNS Server address automatically**. Then click OK.

#### 4.2 For Windows 8

1. Move your mouse to the lower right corner and click the **Serch** icon in the popus.
2. Go to **Apps**, type **Control Panel** in the serche box and press enter.
3. Go to **“Control Panel -> View networks status-> Change adapter settings”**
4. Right-click **Ethernet**,select **Properties**, then double-click **internet protocol version 4( TCP/IPv4)**.



5. Select **Otain an IP address automatically** and **Obtain DNS Server address automatically**. Then click OK.

### 4.3 For windows XP

1. Click “**Start**” -> **Control Panel** -> **Network and Internet Connection** -> **Network Connections**”
2. Right-click **Wireless Networks Connection** (or Local Area Connection), and then click **Properties**.
3. Select **Internet Protocol (TCP/IP)**, and then click **Properties**.
4. Select **Otain an IP address automatically** and **Obtain DNS Server address automatically**. Then click OK.

### 4.4 For Mac OS X

1. Click the **Apple** icon on the upper left corner of the screen.
2. Go to **System Preference** -> **Network**.
3. Select **Airport** on the left menu bar, and then click **Advanced** for wireless configuration; or select **Ethernet** for wired configuration,
4. In the **Configure IPv4** box under TCP/IP, select **Using DHCP**.
5. Click **Apply** to save the settings.

## 5 Quick Setup of the Router

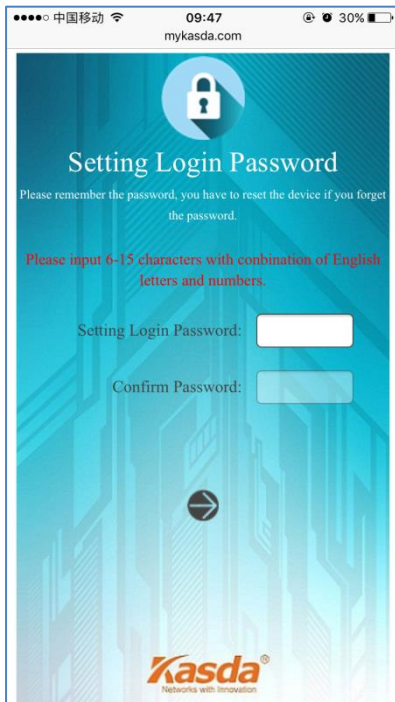
---

In order to use the web-based management software, it will be necessary to use a computer or mobile phone which occupies the same subnet as the Router. The simplest way to do this for many users will be to use DHCP server that is enabled by default on the Router. Please make sure the wan connection is ok.

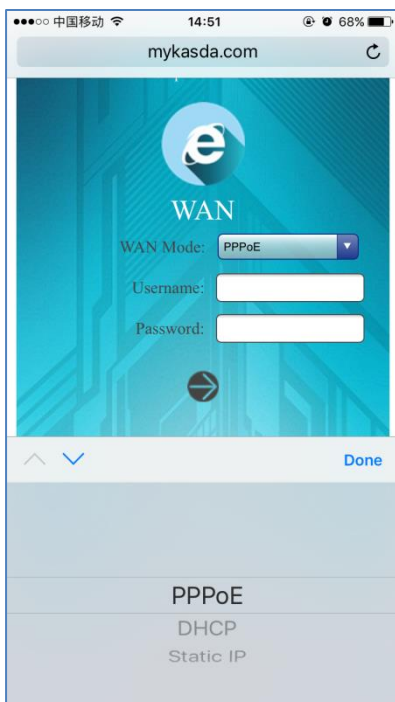
Setup Wizard will guide you through step-by-step process to configure your router and connect to the Internet.

### 5.1 Quick Setup of the Router via mobile phone

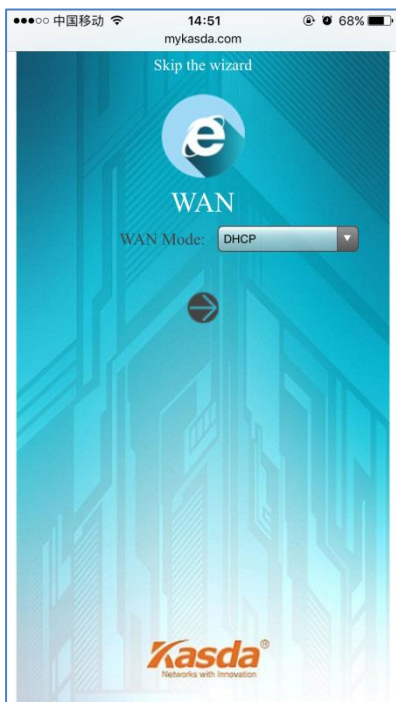
1. Connect your phone to router by using default WiFi network name and password, which are printed on product label at the bottom of the router.
2. Launch a browser on your phone to log in router with [www.mykasda.com](http://www.mykasda.com). Setup your initial login password and then click next button to continue.



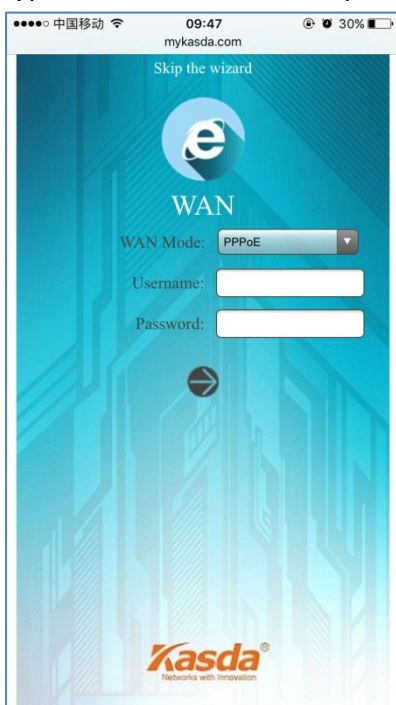
3. Select the WAN Mode



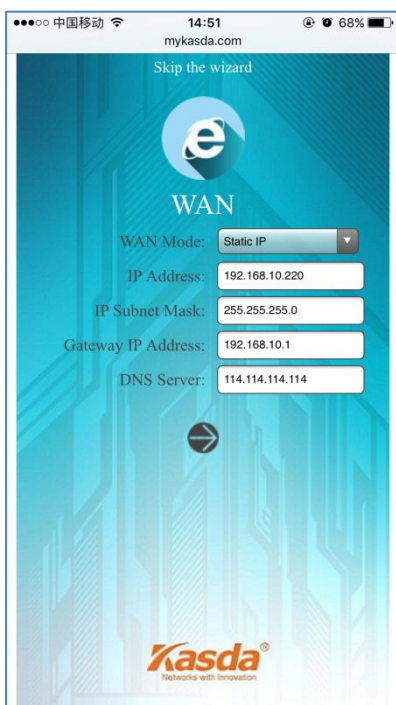
If you don't need any Internet connection information, choose "DHCP".



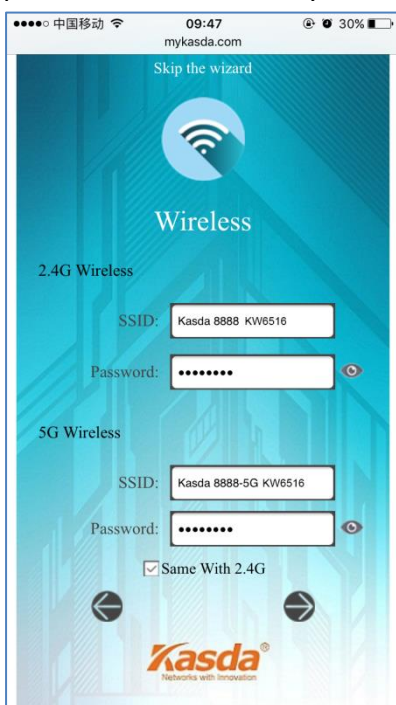
If your ISP gives you a PPP username and password for you, choose "PPPoE" and type in the username and password.



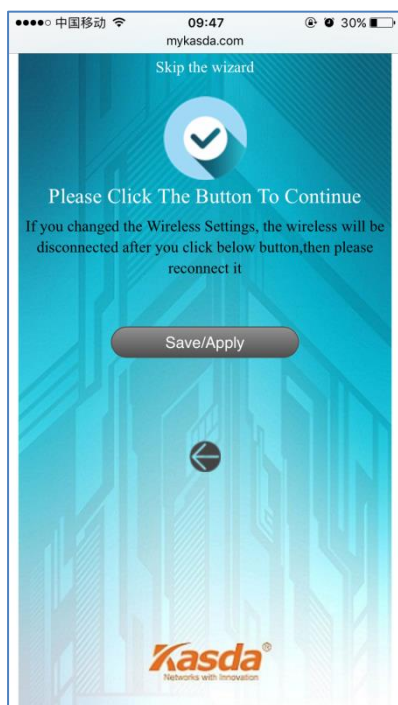
If you have a IP address to connect to the Internet, choose "Static IP" and type in the **IP Address**, **IP Subnet Mask**, **Gateway IP Address** and **DNS Server**.



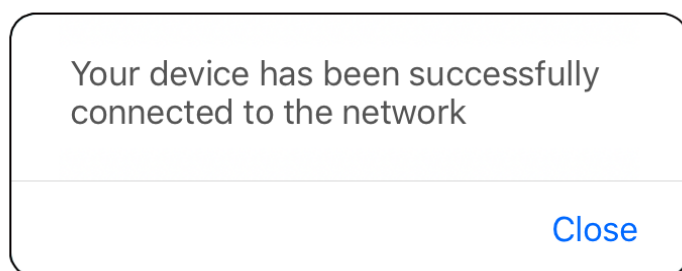
4. Setup your 2.4GHz & 5GHz SSID and password. On the following page, you can rename the SSID and change password or just let it be default. The default password is 12345678, you can check it by clicking the eye button.



5. Click **Save/Apply** and wait for changes to be applied.



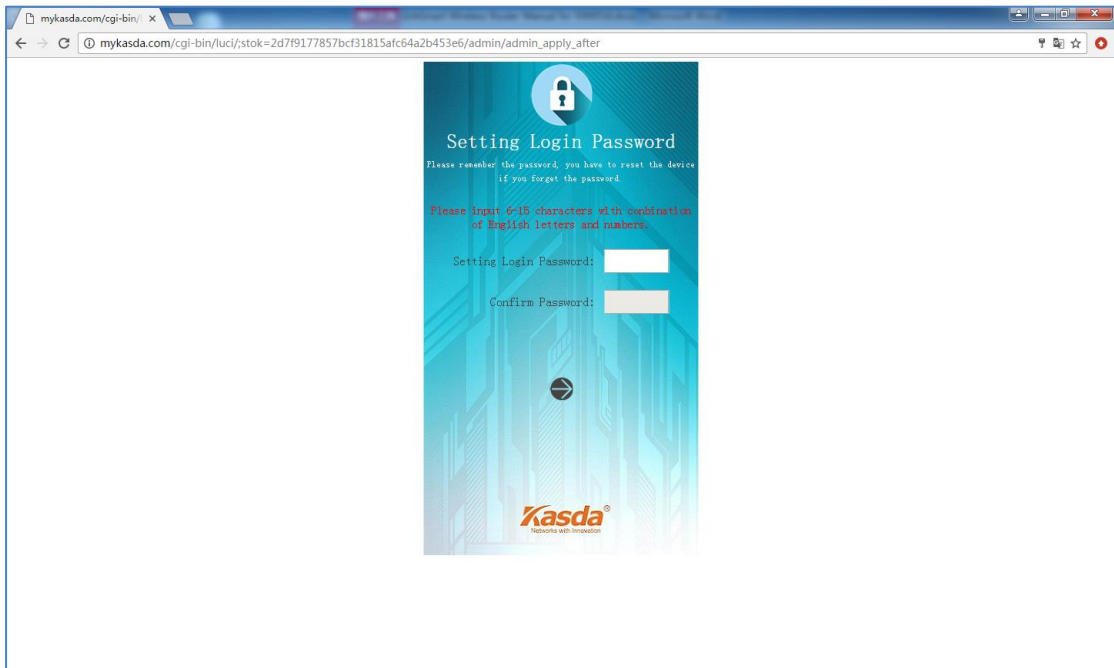
When it blows up the following tips, then you can connect your wired or wireless devices to the Internet.



Note: If you have changed your wireless network name and password, you must sign in with new SSID/password to regain access to the Internet.

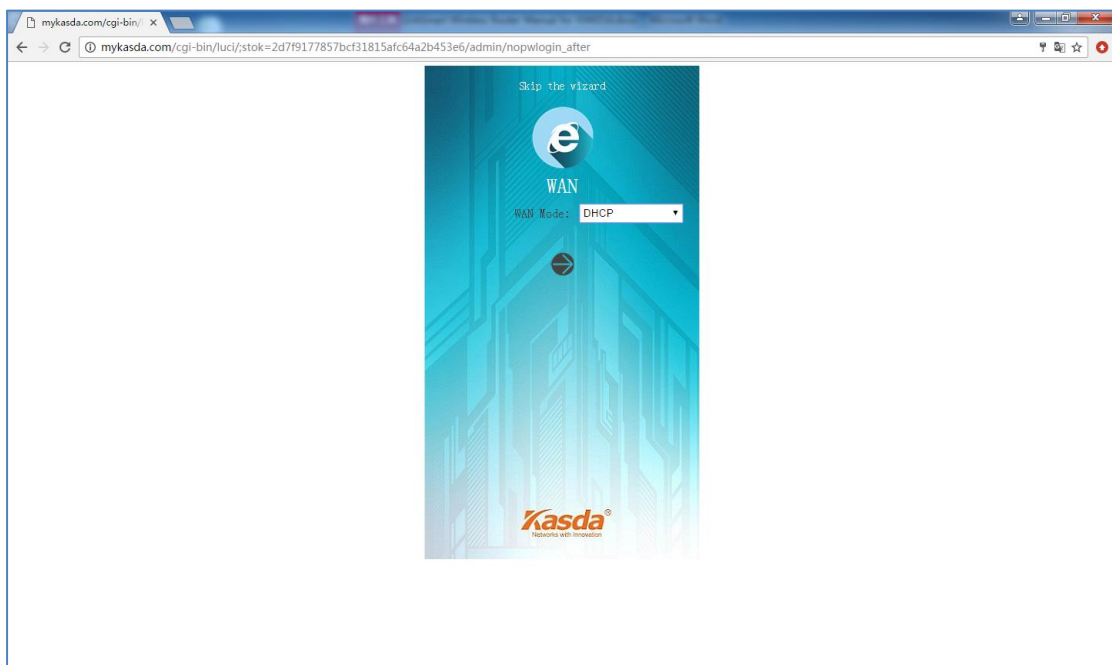
## 5.2 Quick Setup of router via PC

1. Connect your PC to router wired or wirelessly.
2. Launch a browser, such as Internet Explorer or Chrome, and then use [www.mykasda.com](http://www.mykasda.com) to log on the web management page. Here please setup your initial login password. Then click next button to continue.

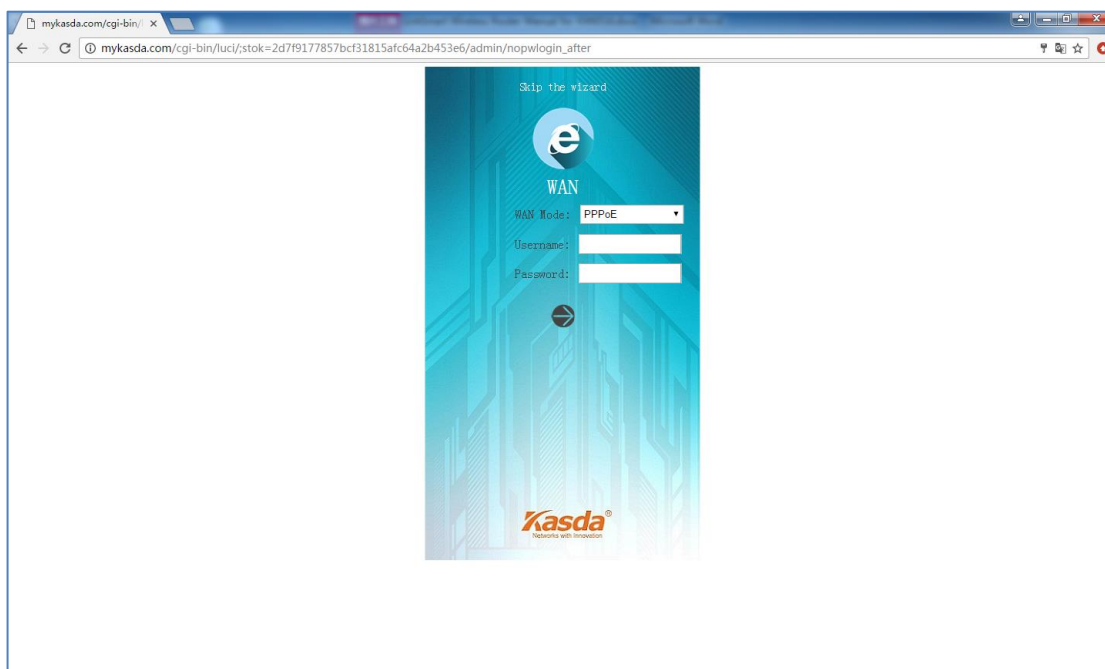


### 3. Set up your WAN Mode

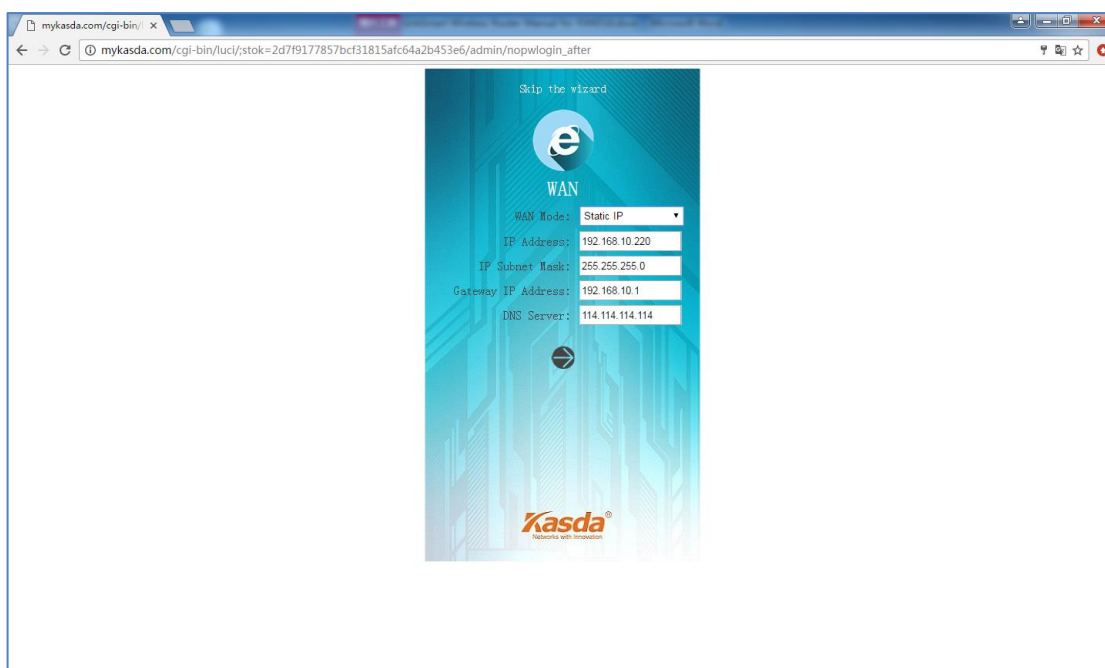
If you don't need any Internet connection information, choose "DHCP" as your WAN Mode.



If your ISP gives you a PPP username and password, choose "PPPoE" as your WAN Mode and type in the username and password.

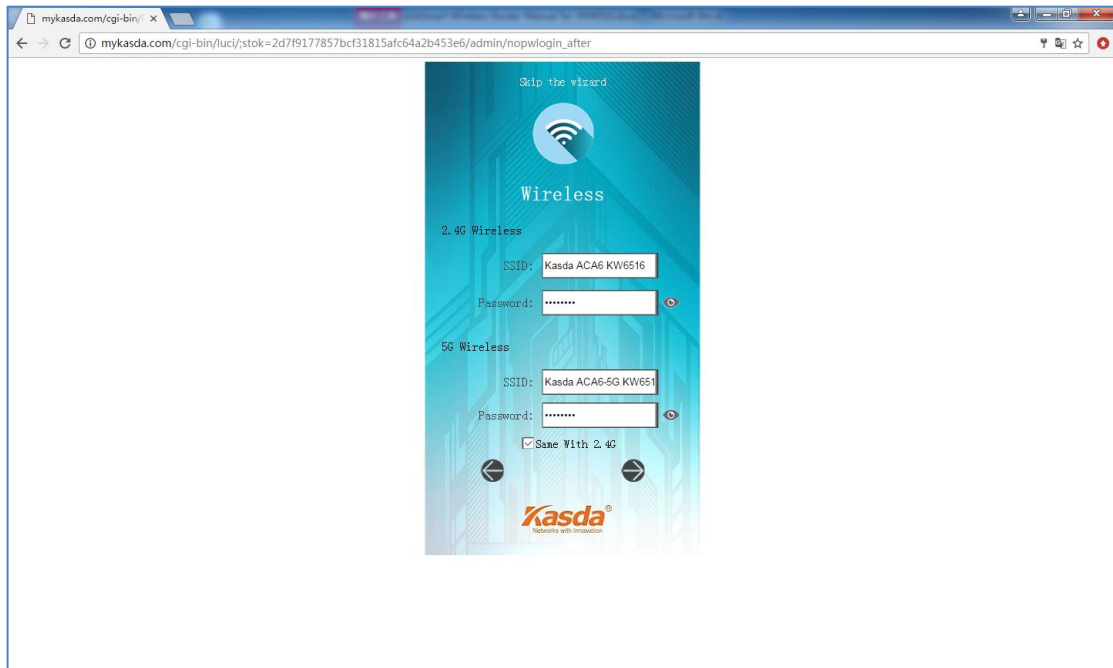


If you have an IP address to connect to the Internet, please choose “Static IP” as your WAN Mode and type in the IP Address, IP Subnet Mask, Gateway IP Address and DNS Server.

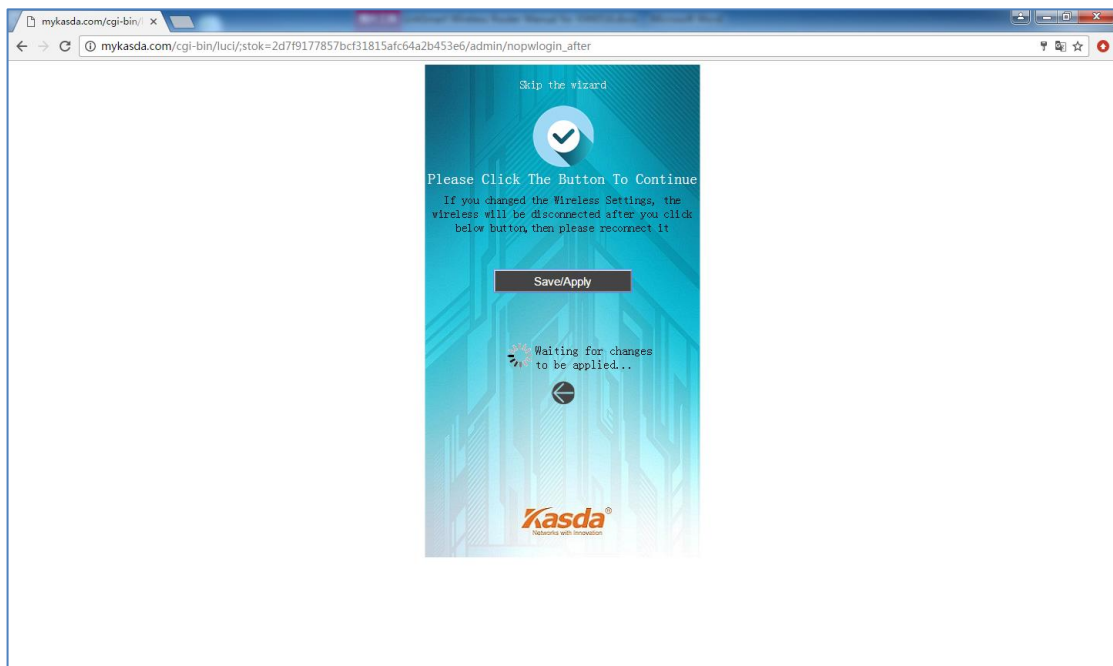


4. Set up your 2.4GHz and 5GHz SSID and password. Keep it as default or rename the SSID and change the password as you like.



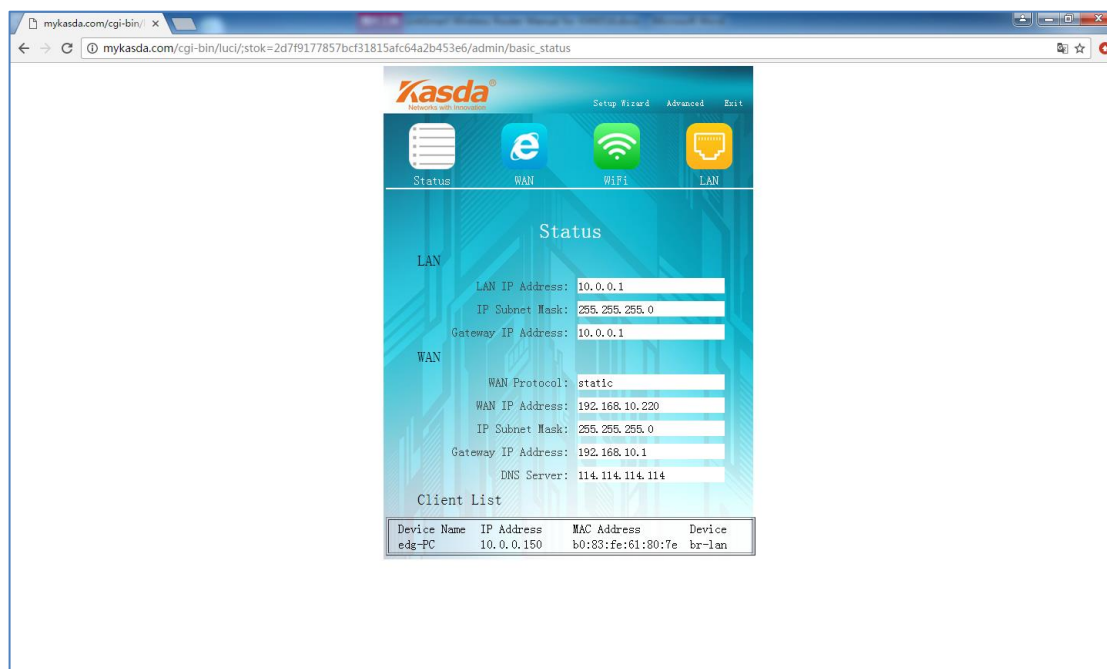


5. Click Save/Apply to continue and wait for the changes to be applied.



After finish the Wizard Setup, you will enter the following page; here you can do a quick change to your WAN, WiFi and LAN.



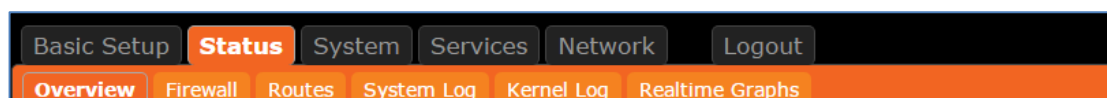


## 6 Web-based Advance Management Guide

This chapter will introduce how to configure your router advanced behind the advanced menu. There are four options: Status, System, Network and Logout.

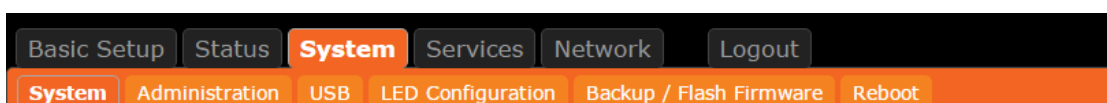
### 6.1. Status

Click **"Status"**, you will go to the device information page. The page displays the current status about **Overview, Firewall, Routers, System Log, Kernel Log, Processes and Real time Graphs.**



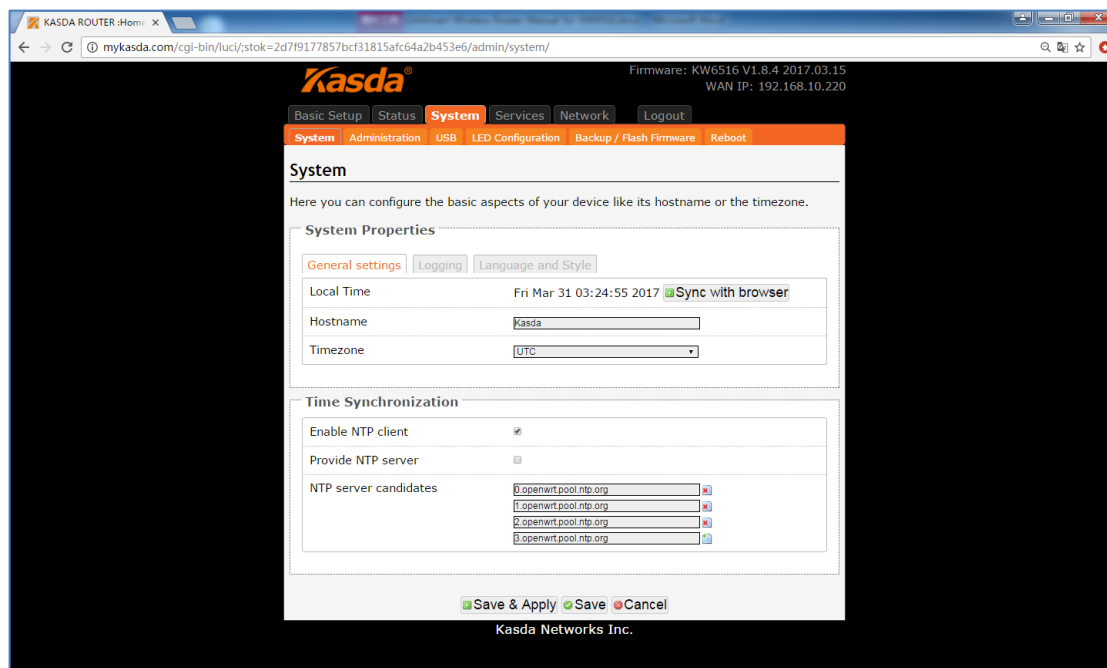
### 6.2. System

Click **"System"**, you will go the system page. In this page, there are six options: **System, Administration, USB, Backup / Flash Firmware and Reboot.**



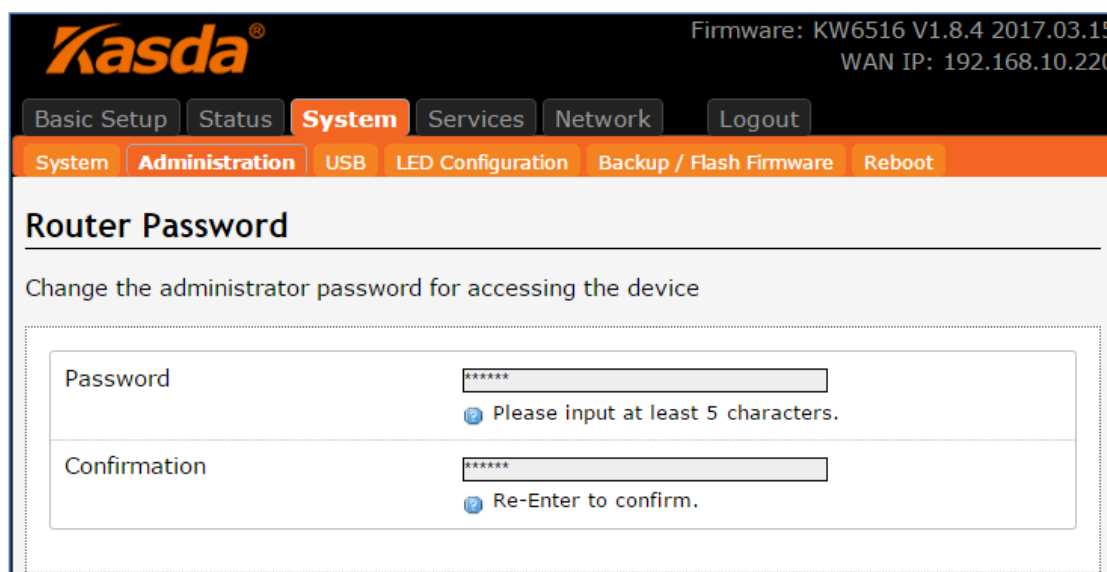
## 6.2.1 System

Here you can configure the basic aspects of your device like its hostname, time-zone, language and style.



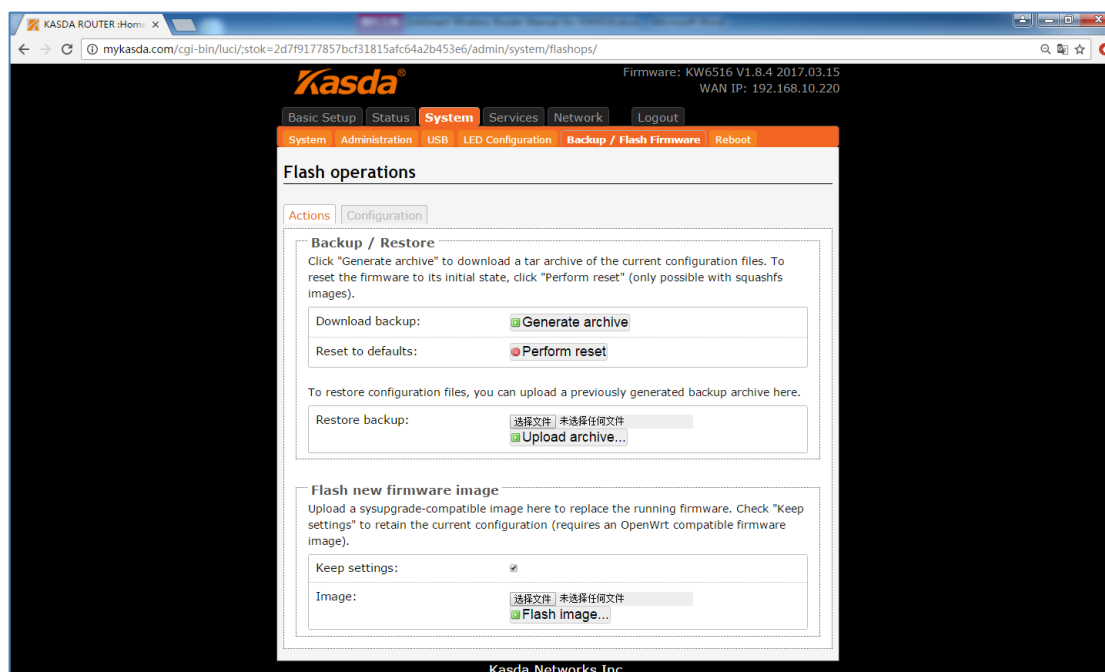
## 6.2.2 Administration

Click "Administration", you will go to the **Router Password** page, and you can change the administrator password for accessing the device.



### 6.2.3 Backup / Flash Firmware

Click “**Backup / Flash Firmware**”, you will go to the **Flash operations** page. On this page, you can do the backup or update the firmware version of routers.



**Generate archive** is to download a tar archive of the current configuration files and save it for back up. You can save it onto another place such as your computer desktop.

**Perform reset** is to reset the router’s firmware to its initial state. If you forget your router’s web management login password, you can reset the router by performing reset.

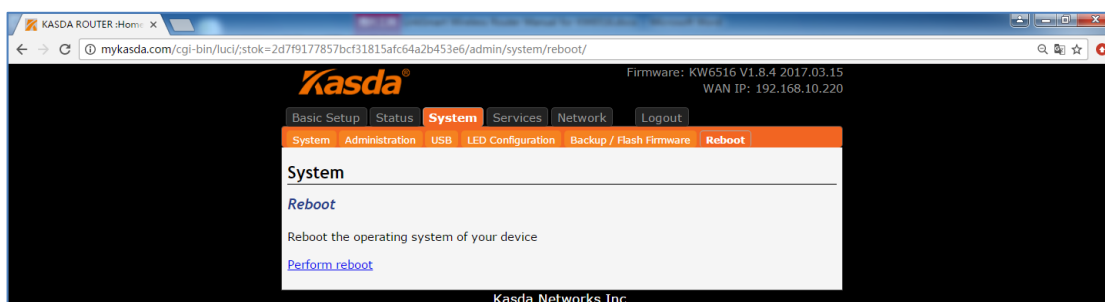
**Upload archive** is to restore the configuration files by upload a previously generated backup archive here.

**Flash new firmware image** is to upload or download a sys-upgrade compatible image here to replace the current running firmware. And if you want to retain the configuration before uploading or downloading, please check “Keep Settings”. As for how to flash new firmware image, you need to choose the firmware you want to flash, and then click **Flash image** to wait for the flash finished. During this period, please do not power off the router.

## 6.2.4 Reboot

Click **“Reboot”**, you will go the following page. Here is for rebooting the operating system of your device by clicking **“Perform reboot”**.

When you reboot your router, the Internet connection will be lost until the process finished.

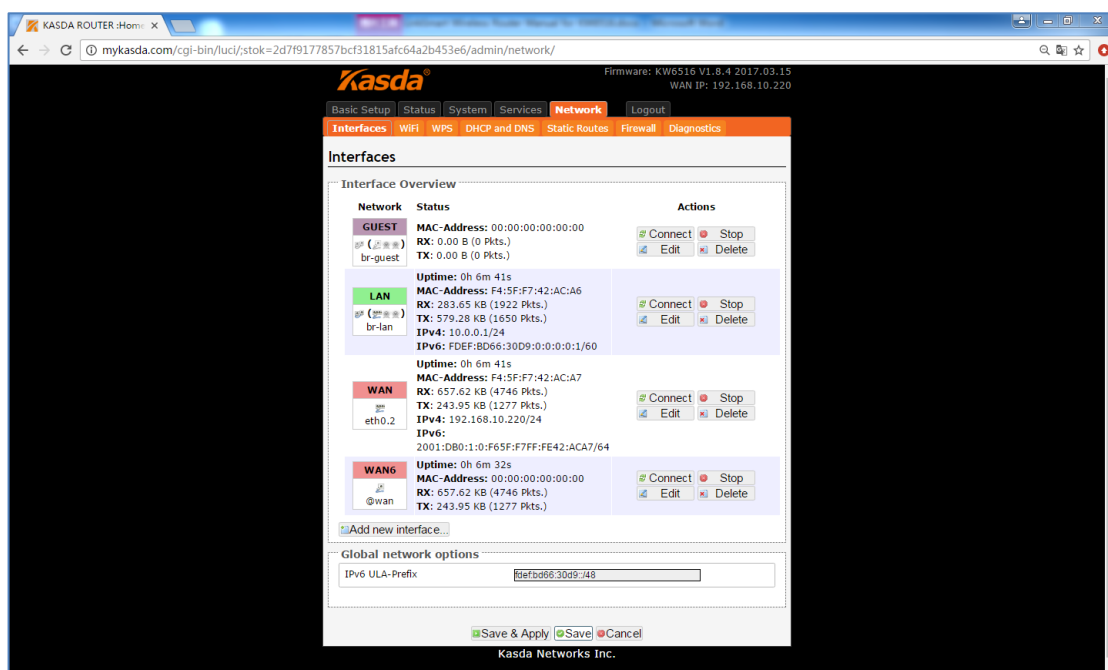


## 6.3. Network

### 6.3.1 Interfaces

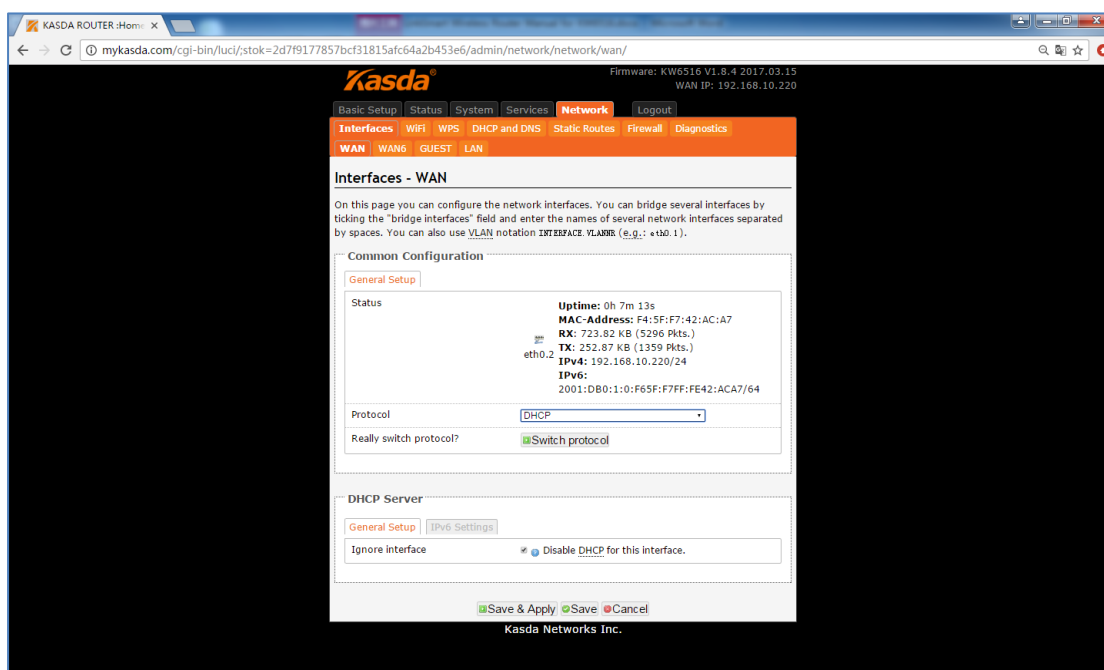
Click **“Interfaces”**, you can see the following page about the router’s interfaces, such as **WAN, WAN6, GUEST** and **LAN**.

On this page, you can overview the router’s interfaces status and do some modify actions to them, such as Connect, Stop, Edit and Delete.



## Interface—WAN

Choose the WAN interface, and you will go to the common configuration such as General Setup, Advanced Settings, Physical Settings and Firewall Settings.



## Wan Connection Protocol

### 1. DHCP

If you connect with a dynamic IP address or cable modem, keep the default: DHCP Protocol.

### Common Configuration

General Setup

Status	<b>Uptime:</b> 0h 7m 33s <b>MAC-Address:</b> F4:5F:F7:42:AC:A7 <b>RX:</b> 845.22 KB (5865 Pkts.) <b>TX:</b> 255.16 KB (1392 Pkts.) <b>IPv4:</b> 192.168.10.220/24 <b>IPv6:</b> 2001:DB0:1:0:F65F:F7FF:FE42:ACA7/64
Protocol	<input type="text" value="DHCP"/>
Really switch protocol?	<input checked="" type="checkbox"/> <span style="border: 1px solid green; padding: 2px;">Switch protocol</span>

## 2. Static

To use a fixed IP Address to connect the Internet, select Static Protocol. Then click **switch protocol** to type in the parameters your ISP provide.

The screenshot shows the 'Interfaces - WAN' configuration page in the KASDA router's web interface. The 'Common Configuration' section is expanded to 'General Setup'. The 'Protocol' is set to 'Static'. The 'IPv4 address' is 192.168.10.220, the 'IPv4 netmask' is 255.255.255.0, and the 'IPv4 gateway' is 192.168.10.1. The status section shows the router's uptime, MAC address, and traffic statistics for the eth0.2 interface.

**IPv4 Address** – enter the IPv4 address provided by your ISP. It is a necessity to connect Internet.

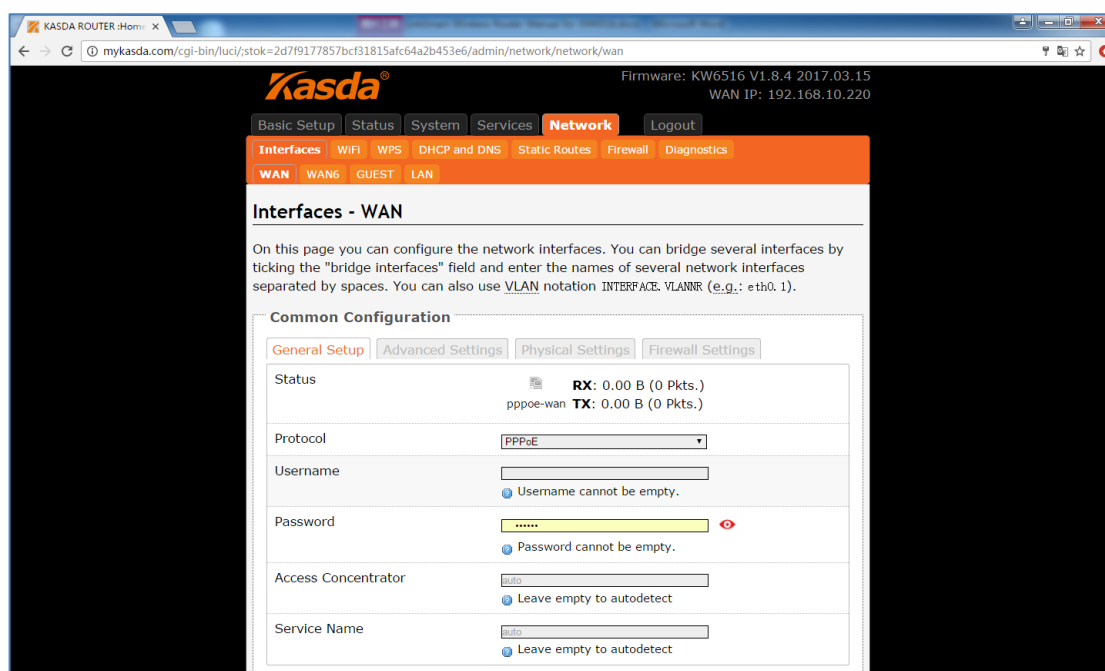
**IPv4 netmask** – enter the netmask provided by you ISP. It is a necessity to connect Internet.

**IPv4 gateway** – enter the gateway IP address provided by your ISP. It is a necessity to connect Internet.

**Use custom DNS servers** – enter the DNS (Domain Name System) server IP address provided by your ISP. If you have two or more DNS servers, you can click the add button behind to add.

### 3. PPPoE

If you use PPPoE connection, select PPPoE as your WAN Protocol and click Switch Protocol to confirm.



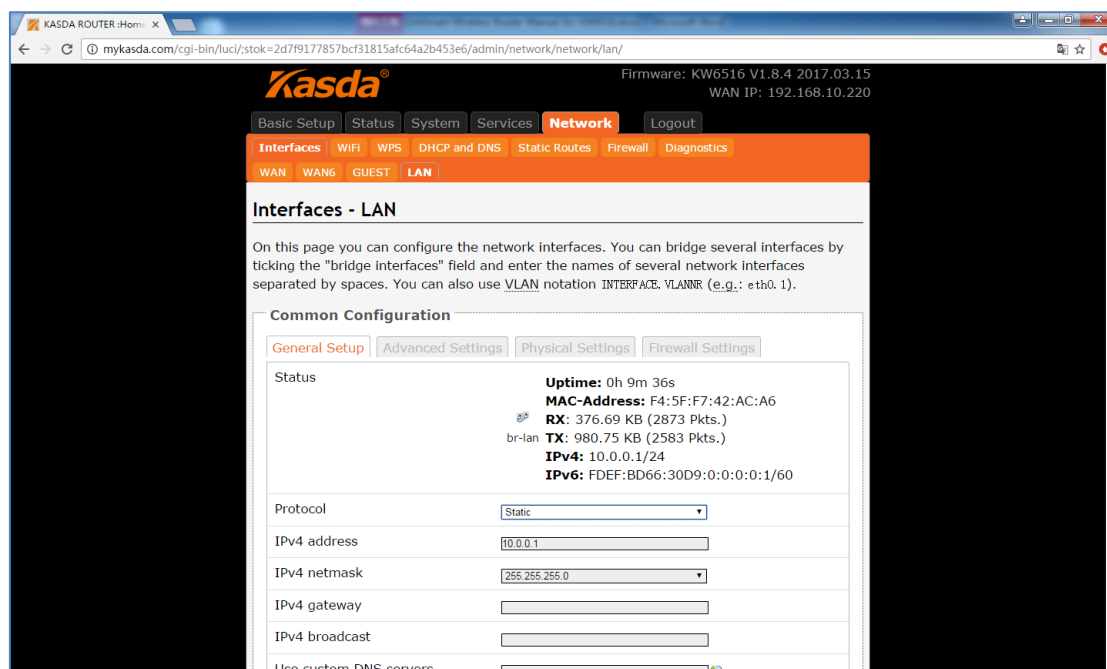
**Username** – enter the username provided by your ISP. It is a necessity to connect the Internet.

**Password** – enter the password provided by your ISP. It is a necessity to connect the Internet.

**Access Concentrator** – enter the Access Concentrator if required by your ISP.

**Service Name** – enter the Service Name, if required by your ISP, or just leave it empty to autodetect.

## Interface – LAN



**IPv4 Address / Netmask:** this is the router IP address and subnet mask as seen on the Internet LAN. The default value is 192.168.1.1 for IP address and 255.255.255.0 for netmask.

**Ignore interface** – check it to disable the DHCP for this interface

**Start IP** – lowest leased address as offset from network address

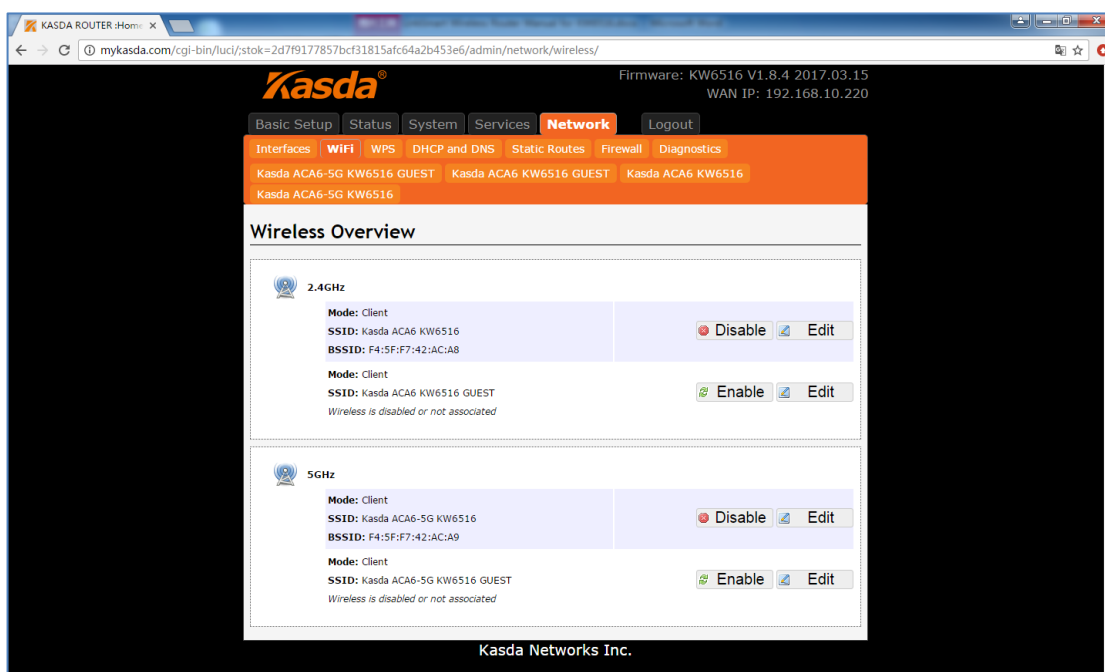
**Limit** – enter the maximum number of PCs that you want the DHCP server to assign IP addresses to. The absolute maximum is 253, possible if 192.168.1.2 is your starting IP address.

**Lease time** – enter the length of time, in minutes, that a DHCP client will be allowed to use a dynamic IP address. The default is 0 minute, which means one day. After this time is up, the client will be automatically assigned a new dynamic IP address, or the lease will be renewed.

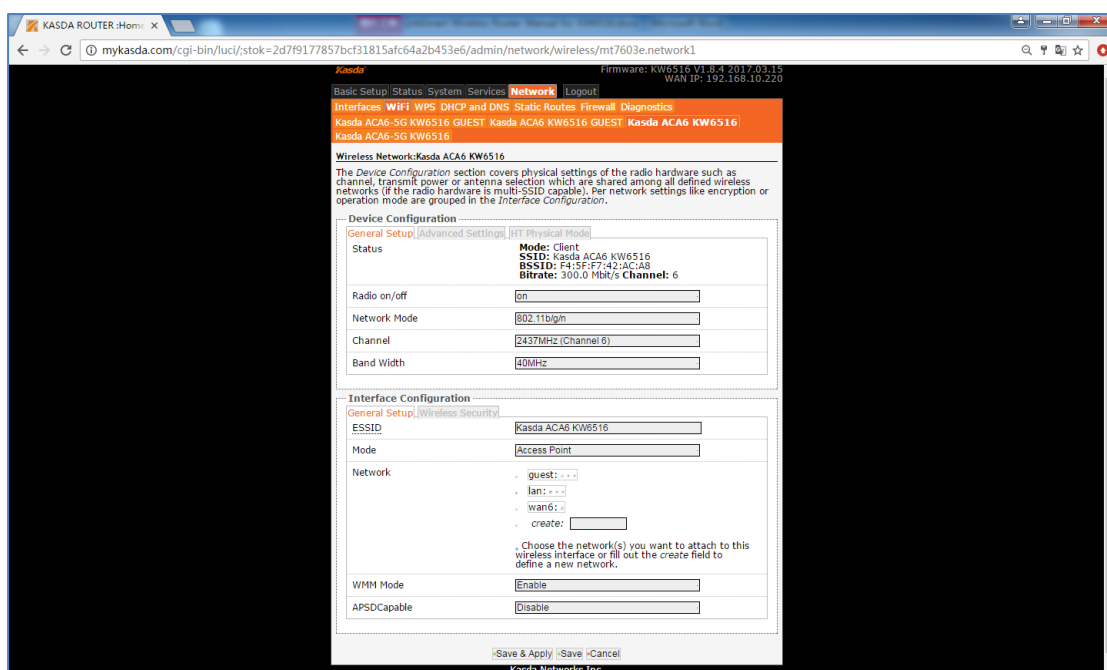


### 6.3.2 WiFi

Click **“WiFi”**, you will go to the wireless overview page. There are four wireless SSID by default: 2.4GHz, 5GHz and Guest for 2.4GHz&5GHz. On the overview page, you can **disable/enable, edit** and **remove** the WiFi SSID.



Click the **“Edit”**, and you will go the page where you can modify the parameters.



**Radio on/off** – when wireless clients survey the local area for wireless networks to associate with, they will detect the SSID radio by the router. To broadcast your router SSID, keep the default setting—on. If you do not want to broadcast the router SSID, then select off.

**Network Mode** – keep it default as 802.11b/g/n. If you have special demand, you can select the mode as you like.

**Channel** – this field determines which operating frequency will be used. It is not necessary to change the wireless channel unless you notice interference problems with another nearby access point. If you select auto, then router will choose the best channel automatically.

**Bandwidth** – the bandwidth of the wireless channel.

**ESSID** – it is the name of your wireless network. You can keep it default or rename it as you like.

**Mode** – when you set up the wireless network via Wizard Setup, it is Client mode by default. Most customers choose “Access Point”.

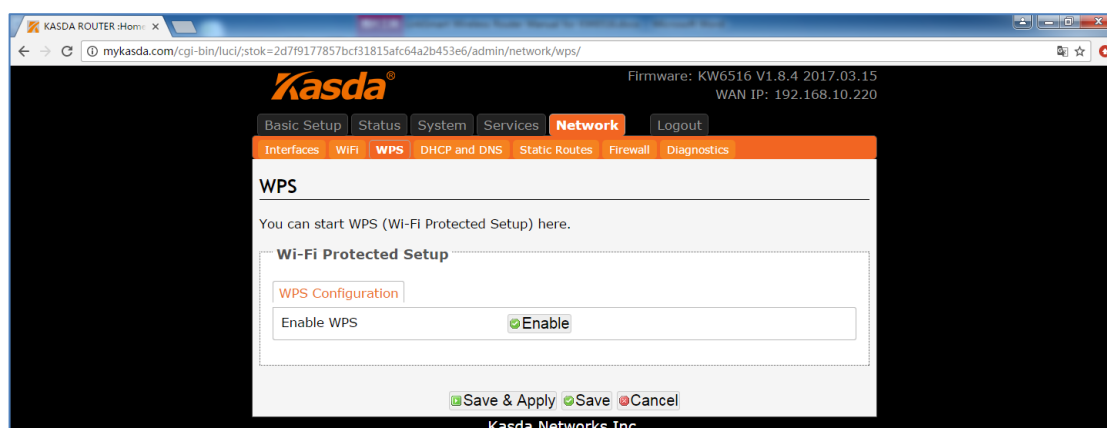
**Network** – Choose the network(s) you want to attach to this wireless interface or fill out the *create* field to define a new network.

**WMM Mode** – keep it default “Enable”.

**APSDCapable** – it is for power saving. Choose enable if you need or keep it default.

### 6.3.3 WPS

You can start WPS (Wi-Fi Protected Setup) here by click the Enable button.



## 6.4 Logout

Click [here](#) for logging out your router and it will go back to the login page.

## Appendix: Frequent Asked Questions

---

This chapter offers some suggestions to solve problems you might encounter. The potential problems are divided into 3 categories: Power, Hardware Connections, and LEDs; Device Access and Login; Internet Access.

### 1. Power, Hardware Connections, and LEDs

[None of the LEDs are on when power on the router.](#)

Please make sure what you use is the power adaptor attached with the router package and checks the connection between the AC power and router.

[LAN LED does not turn on after connect Ethernet cable.](#)

Please make sure Ethernet cable is connected hub/PC and router correctly. Then please make sure the PC/hub have been power on.

Please make sure that you use parallel network cable to connect UpLink port of hub, or use parallel network cable to connect PC. If connect normal port of hub (not UpLink port), you must use cross-cable. Please make sure that your network cables meet the networking requirements above.

### 2. Device Access and Login

[I forgot the password.](#)

1. You have to reset the device to its factory defaults and set your initial login password and keep it in mind.

[I cannot see or access the Login screen in the web configurator.](#)

1. Make sure you are using the correct IP address.

The default login address is **www.mykasda.com**.

If you changed the IP address, use the new IP address.

If you changed the IP address and have forgotten it, see the **Frequent Asked Questions for I forgot the IP address for the Router**.

Make sure you are using the correct IP address.

2. Check the hardware connections, and make sure the LEDs are behaving as expected.
3. Make sure your Internet browser does not block pop-up windows.
4. Make sure your computer is in the same subnet as the Router.

If there is a DHCP server on your network, make sure your computer is using a dynamic IP address.

If there is no DHCP server on your network, make sure your computer's IP address is in the same subnet as the router.

5. Reset the device to its factory defaults and reboot it again.

#### [My PC is unable to connect to the wireless connection.](#)

Please make sure that all devices communicating with the device must use the same channel (and use the same SSID). Otherwise your PC will not find the wireless Router.

### 3. Internet Access

#### [My PC cannot access the Internet](#)

First check whether PC can ping the interface Ethernet IP address of this product successfully (default value is 192.168.1.1) by using ping application. If ping application fails, please check the connection of Ethernet cable and check whether the states of LEDs are in gear.

If the PC uses private IP address that is set manually (non-registered legal IP address), please check:

1. Whether IP address of the PC gateway is legal IP address. Otherwise please use the right gateway, or set the PC to Obtain an IP address automatically.
2. Please confirm the validity of DNS server appointed to the PC with operator. Otherwise please use the right DNS, or set the PC to Obtain an IP address automatically.
3. Please make sure you have set the NAT rules and convert private IP address to legal IP address. IP address range of the PC that you specify should meet the setting range in NAT rules.
4. Central Office equipment may have problem.
5. The country or the wireless network type you selected is wrong.

#### [My PC cannot browse Internet web page.](#)

Please make sure DNS server appointed to the PC is correct. You can use ping application program to test whether the PC can connect to the DNS server of the operator.

***If the cause is not given above, please contact your local service provider!***



1141 Budapest, Fogarasi út 77.      1095 Budapest, Mester u. 34.  
Tel.: \*220-7940, 220-7814, 220-7959,      Tel.: \*218-5542, 215-9771, 215-7550,  
220-8881, 364-3428 Fax: 220-7940      216-7017, 216-7018 Fax: 218-5542  
Mobil: 30 531-5454, 30 939-9989      Mobil: 30 940-1970, 30 959-0930

**www.delton.hu**

E-mail: [info@delton.hu](mailto:info@delton.hu) Web: [www.delton.hu](http://www.delton.hu)